



## TWO STAGE HEAVY OIL BURNERS

► PRESS N/ECO SERIES	► PRESS 30 N/ECO	85/171 ÷ 342 kW
	► PRESS 45 N/ECO	114/205 ÷ 513 kW
	► PRESS 60 N/ECO	171/342 ÷ 684 kW
	► PRESS 100 N/ECO	285/490 ÷ 1140 kW



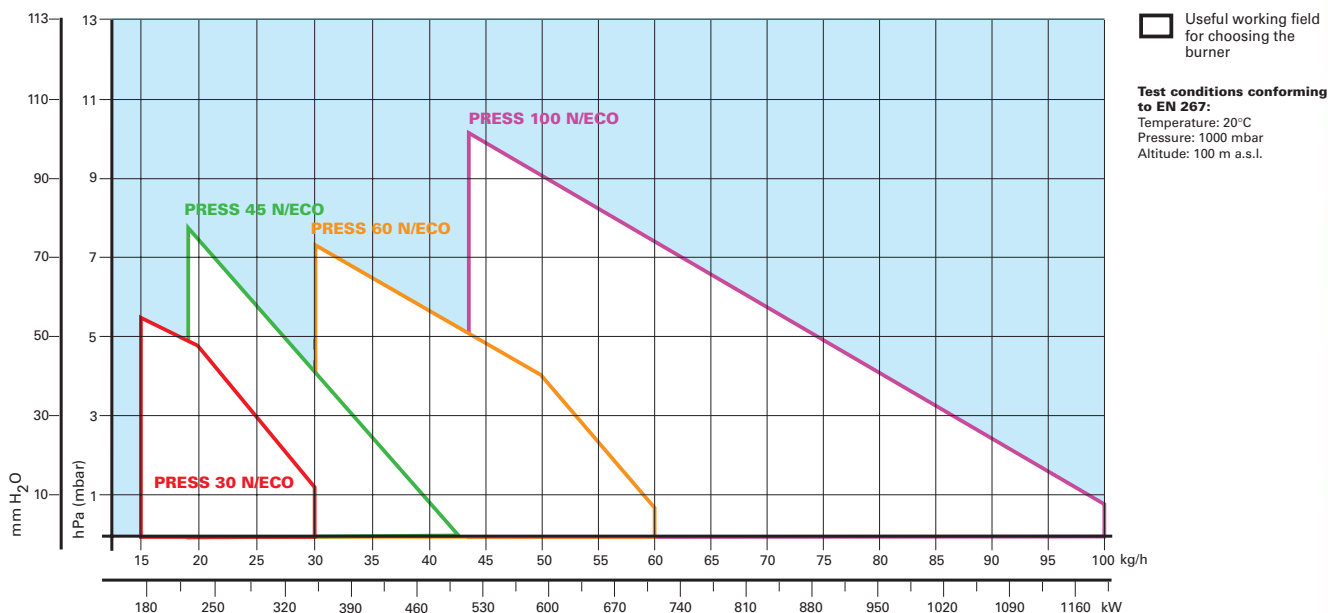
Press N/Eco burner series covers a firing range from 85 to 1140 kW and it has been designed for operation with low sulphur fuels. The burners are equipped with a separate low speed pump. They have been designed for use in civil installations of average dimensions, like building areas and large apartment groups or for use in industrial applications, like small or medium plants. Operation is two stage; a servomotor adjust automatically air damper opening, to obtain the right air delivery on both stage. The burners are fitted with a microprocessor control panel which supplies indication of operation and diagnosis of fault cause.

The combustion head, that can be set on the basis of required output, allows optimal performance ensuring good combustion and reducing fuel consumption and is available in two different length to be selected on the basis of specific application requirements.

In basic version the burners are supplied for use with heavy oil 7°E viscosity, but they can be supplied with higher viscosity oil with a specific heaters kit.

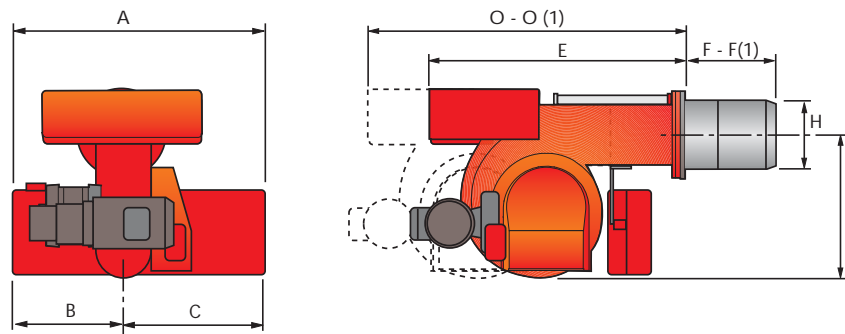
Simplified maintenance is achieved by the slide bar system, which allows easy access to all of the essential components of the combustion head.

### FIRING RATES



## PRESS N/ECO series - OVERALL DIMENSIONS (mm)

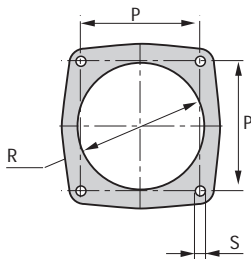
### BURNER



Model	A	B	C	E	F - F(1)	H	I	O - O(1)
▶ <b>PRESS 30 N/ECO</b>	625	335	290	625	185 - 320	161	305	968 - 1103
▶ <b>PRESS 45 N/ECO</b>	625	335	290	625	235 - 370	161	305	1018 - 1153
▶ <b>PRESS 60 N/ECO</b>	625	335	290	660	245 - 400	172	335	1079 - 1234
▶ <b>PRESS 100 N/ECO</b>	625	335	290	710	250 - 410	195	370	1126 - 1216

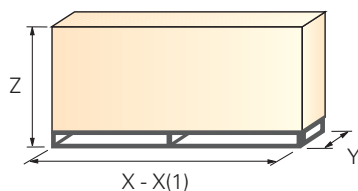
(1) Length with extended combustion head

### BURNER - BOILER MOUNTING FLANGE



Model	P	R	S
▶ <b>PRESS 30 N/ECO</b>	160	170	M 10
▶ <b>PRESS 45 N/ECO</b>	160	170	M 10
▶ <b>PRESS 60 N/ECO</b>	160	180	M 10
▶ <b>PRESS 100 N/ECO</b>	195	205	M 12

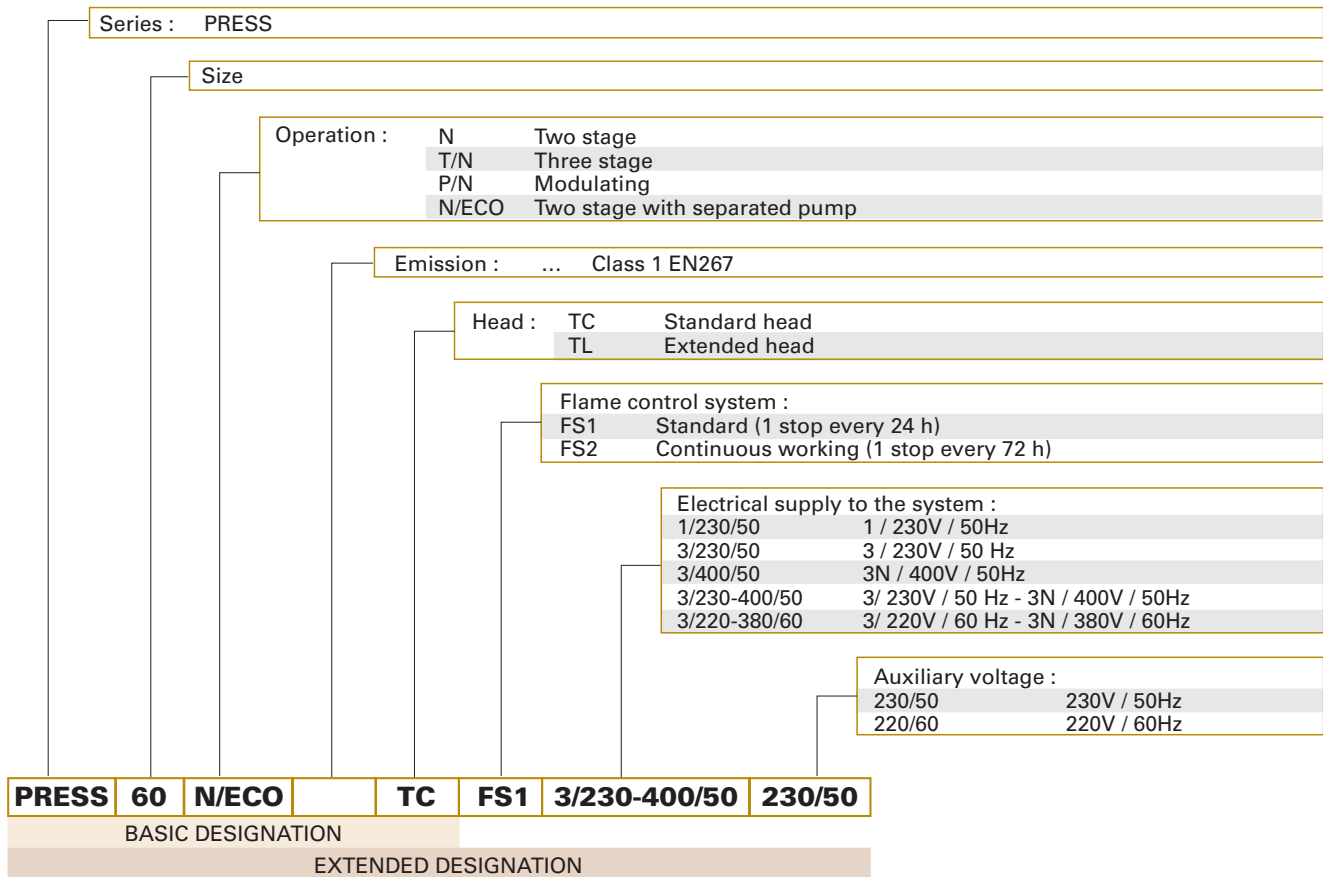
### PACKAGING



Model	X - X(1)	Y	Z	kg
▶ <b>PRESS 30 N/ECO</b>	880 - 1015	690	622	84
▶ <b>PRESS 45 N/ECO</b>	880 - 1015	690	622	84
▶ <b>PRESS 60 N/ECO</b>	925 - 1095	760	652	87
▶ <b>PRESS 100 N/ECO</b>	985 - 1145	790	652	104

(1) Length with extended combustion head

## PRESS N/ECO series - SPECIFICATION



### ► PRESS N/ECO series - STATE OF SUPPLY

Monoblock forced draught heavy oil burner, two stage operation, made up of:

- Air suction circuit
- Fan with forward curved blades
- Air dampers for air setting controlled by a servomotor
- Fan motor at 2850 rpm
- Oil pump motor at 1400 rpm
- Combustion head, fitted with:
  - stainless steel end cone, resistant to corrosion and high temperatures
  - ignition electrodes
  - flame stability disk
- Gears pump for high pressure fuel supply, fitted with:
  - filter
  - pressure regulator
  - connections for installing a pressure gauge and vacuumeter
  - internal by-pass for single pipe installation
- Valve unit with a double oil safety valve on the output circuit
- Double filter between pump and nozzle
- Oil preheater provided with chance of a thermometer application for temperature control
- Servomotor for air damper regulation
- Air pressure switch
- Photocell for flame detection
- Microprocessor-based flame control panel, with diagnostic function
- Flame inspection window
- Slide bars for easier installation and maintenance
- Protection filter against radio interference
- IP 40 protection level.

#### Standard equipment:

- 2 flexible hoses for pipe connection
- 2 gaskets for flexible hoses
- 2 nipples for flexible hoses
- 1 thermal insulation screen
- 4 screws for fixing the burner flange to the boiler
- 2 nozzles (see table of available burner model)
- 2 extensions for bars (for long head version)
- Instruction handbook for installation, use and maintenance
- Spare parts catalogue.

## PRESS N/ECO series - AVAILABLE BURNER MODELS

Code	Model					Heat output		Total electrical power kW	Certification	Note
						(kW)	(kg/h)			
3433823	PRESS 30 N	TC	FS1	1/230/50	230/50	85/171-342	7,5/15-30	3,4	-	(1)
3433824	PRESS 30 N	TL	FS1	1/230/50	230/50	85/171-342	7,5/15-30	3,4	-	(1)
3433881	PRESS 30 N	TC	FS1	3/220-380/60	220/60	85/171-342	7,5/15-30	3,7	-	
3433882	PRESS 30 N	TL	FS1	3/220-380/60	220/60	85/171-342	7,5/15-30	3,7	-	
3434623	PRESS 45 N	TC	FS1	3/230-400/50	230/50	114/205-513	10/18-45	3,6	-	(1)
3434624	PRESS 45 N	TL	FS1	3/230-400/50	230/50	114/205-513	10/18-45	3,6	-	(1)
3434681	PRESS 45 N	TC	FS1	3/220-380/60	220/60	114/205-513	10/18-45	3,7	-	
3434682	PRESS 45 N	TL	FS1	3/220-380/60	220/60	114/205-513	10/18-45	3,7	-	
3435023	PRESS 60 N	TC	FS1	3/230-400/50	230/50	171/342-684	15/30-60	5,5	-	(1)
3435024	PRESS 60 N	TL	FS1	3/230-400/50	230/50	171/342-684	15/30-60	5,5	-	(1)
3435081	PRESS 60 N	TC	FS1	3/220-380/60	220/60	171/342-684	15/30-60	5,8	-	
3435082	PRESS 60 N	TL	FS1	3/220-380/60	220/60	171/342-684	15/30-60	5,8	-	
3436023	PRESS 100 N/ECO	TC	FS1	3/230-400/50	230/50	285/490-1140	25/43-100	9,0	-	(1)
3436024	PRESS 100 N	TL	FS1	3/230-400/50	230/50	285/490-1140	25/43-100	9,0	-	(1)
3436081	PRESS 100 N	TC	FS1	3/220-380/60	220/60	285/490-1140	25/43-100	9,0	-	
3436082	PRESS 100 N	TL	FS1	3/220-380/60	220/60	285/490-1140	25/43-100	9,0	-	

(1) 2 nozzles as standard equipment.

Net calorific value: 11,16 kWh/kg; 9600 kcal/kg - Max Viscosity at 50°C: 50 mm<sup>2</sup>/s (cSt)(7°E).

The burners of PRESS series are in according to 89/336 - 73/23 CEE Directive and EN 267 Norm.

## PRESS N/ECO series - BURNER ACCESSORIES

### Spacer kit



If burner head penetration into the combustion chamber needs reducing, varying thickness spacers are available, as given in the list.

Burner	Spacer thickness S (mm)	Kit code
P 30 N/ECO - 45 N/ECO - 60 N/ECO	142	3000755
P 100 N/ECO	142	3000802

### Sound proofing box



If noise emission needs reducing even further, sound-proofing boxes are available.

Burner	Box type	Average noise reduction [dB(A)]	Box code
PRESS 30 N/ECO - 45 N/ECO PRESS 60 N/ECO - 100 N/ECO	C3	14	3000778

### Selfcleaning filter



For cleaning heavy oil from dirty particles and impurities, it is equipped with a thermostatic heater for oil with 50°E viscosity at 50°C.

Filter type	Filter code
ø=1 50°E – 50°C	3000790

Heater type	Heater code
Thermostatic heater 80W	3010059

### Heavy oil kit



Equipped with electrical heaters, it permits the employment of PRESS N burners with fuel oil of greater viscosity.

Burner	Max viscosity	Kit code
PRESS 30 N/ECO - 45 N/ECO	20°E at 50°C	3000797
PRESS 60 N/ECO - 100 N/ECO	65°E at 50°C	3010013

## PRESS N/ECO series - BURNER ACCESSORIES

### Cartridge filter

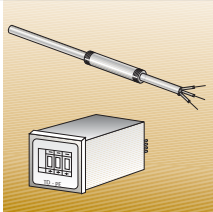


For cleaning heavy oil from dirty particles and impurities, it is equipped with a cartridge system for oil with 7°E viscosity at 50°C.

Filter type	Filter code
Cartridge 7°E – 50°C	3005209

Heater type	Heater code
Thermo - resistance up to 30° E - 50°	3010050

### Thermostats



Thermostats allow heavy oil temperature control and regulation during burner operation. They are available in electronic and maximum versions.

Burner	Thermostat type	Thermostat code
All models	Electronic	3000799


### Interface adapter kit



To connect the flame control panel to a personal computer for the transmission of operation, fault signals and detailed service information, an interface adapter with PC software are available.

Burner	Kit code
All models	3002719

## PRESS N/ECO series - BURNER ACCESSORIES

Nozzle	<b>type F80 PL 45°</b>			
 <p>The nozzles must be ordered separately. The following table shows the features and codes on the basis of the maximum required output.</p> <p>NOTE: each burner needs N° 2 nozzles.</p>	Burner	Rated delivery (kg/h) at 20 bar	GPH	Nozzle code
	P 30 N/ECO - 45 N/ECO	10,6	2	3043121
	P 30 N/ECO - 45 N/ECO	11,9	2,25	3043131
	P 30 N/ECO - 45 N/ECO - 60 N/ECO	13,2	2,5	3043141
	P 45 N/ECO - 60 N/ECO	15,8	3	3043151
	P 45 N/ECO - 60 N/ECO - 100 N/ECO	18,5	3,5	3043161
	P 45 N/ECO - 60 N/ECO - 100 N/ECO	21,1	4	3043171
	P 60 N/ECO - 100 N/ECO	23,7	4,5	3043181
	P 60 N/ECO - 100 N/ECO	26,4	5	3043191
	P 100 N/ECO	29	5,5	3043201
	P 100 N/ECO	31,7	6	3043211
	P 100 N/ECO	34,3	6,5	3043221
	P 100 N/ECO	36,9	7	3043231
	P 100 N/ECO	39,6	7,5	3043241
	P 100 N/ECO	44,8	8,5	3043261
		<b>type F80 PL 60°</b>		
Burner	Rated delivery (kg/h) at 20 bar	GPH	Nozzle code	
P 30 N/ECO	6,6	1,25	3043092	
P 30 N/ECO - 45 N/ECO	7,9	1,5	3043102	
P 30 N/ECO - 45 N/ECO	9,2	1,75	3043112	
P 30 N/ECO - 45 N/ECO	10,6	2	3043122	
P 30 N/ECO - 45 N/ECO	11,9	2,25	3043132	
P 30 N/ECO - 45 N/ECO - 60 N/ECO	13,2	2,5	3043142	
P 45 N/ECO - 60 N/ECO	15,8	3	3043152	
P 45 N/ECO - 60 N/ECO - 100 N/ECO	18,5	3,5	3043162	
P 45 N/ECO - 60 N/ECO - 100 N/ECO	21,1	4	3043172	
P 60 N/ECO - 100 N/ECO	23,7	4,5	3043182	
P 60 N/ECO - 100 N/ECO	26,4	5	3043192	
P 100 N/ECO	29	5,5	3043202	
P 100 N/ECO	31,7	6	3043212	
P 100 N/ECO	34,3	6,5	3043222	
P 100 N/ECO	36,9	7	3043232	
P 100 N/ECO	39,6	7,5	3043242	
P 100 N/ECO	44,8	8,5	3043262	